

Cropinno

Powered by satellite & AI technology

Designed to make farming more convenient & sustainable

website: www.cropinno.com

Email: info@cropinno.com



Cropinno.co



Cropinno.co



Cropinno.co



Cropinno

UP TO **35%**
YIELD INCREASE
UP TO **20%**
SAVED COSTS



Who Are We?

Cropinno is an easy-to-use tool for precision agriculture and farm management. our services are powered by satellite remote-sensing Technology & AI (Artificial Intelligence) and is designed to provide regular information about crops to increase yield and profitability. The core features of Cropinno are:



Satellite Monitoring

Crop condition maps updating 3 to 5 days:

- Greenness
- Growth rate
- land coverage
- water content
- and many more



Smart Alarms

Automatic smart alarms which detects any Early detection of crop stresses.



AI Recommender System

variable rate fertilizer recommendation maps for applying The 4R's (Right Source, Right time, Right place, Right amount)



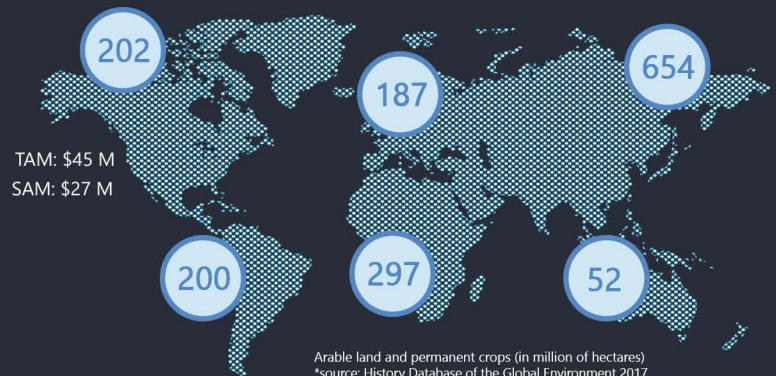
Farm Management

The farmers day-to-day logbook for activities & costs, recording all the diaries on the field.

Clients

- farmers growing wheat, Barely, Canola, Corn
- food & Beverage Companies
- Agronomists & Consultants
- Agriculture Suppliers

How big is the market?



Achievements

- 3 SAAS Products(Crop Monitoring, Crop Mapping, Change Detection)
- +Trusted by 5 agriculture companies in ME
- +1200 Farms
- +210,000 Acres Processed
- +120 TB of data Processed
- +6 Best Startup Awards & Nominations

Financial Information

Subscription is free and customers pay monthly \$0.99/\$1.99 per hectare for standard/premium services available in 3 to 12 month packages. The target number of acres will rise to 10,000 in 2022 taking advantage of the product and generate almost \$100,000 of revenue.

Start and get **2 months free** subscription for your farm!

Contact: 325 Front St W Suite 300 | Toronto ON M5V 2Y1, +1 (647) 888-3715